

LEO Quick Start Guide

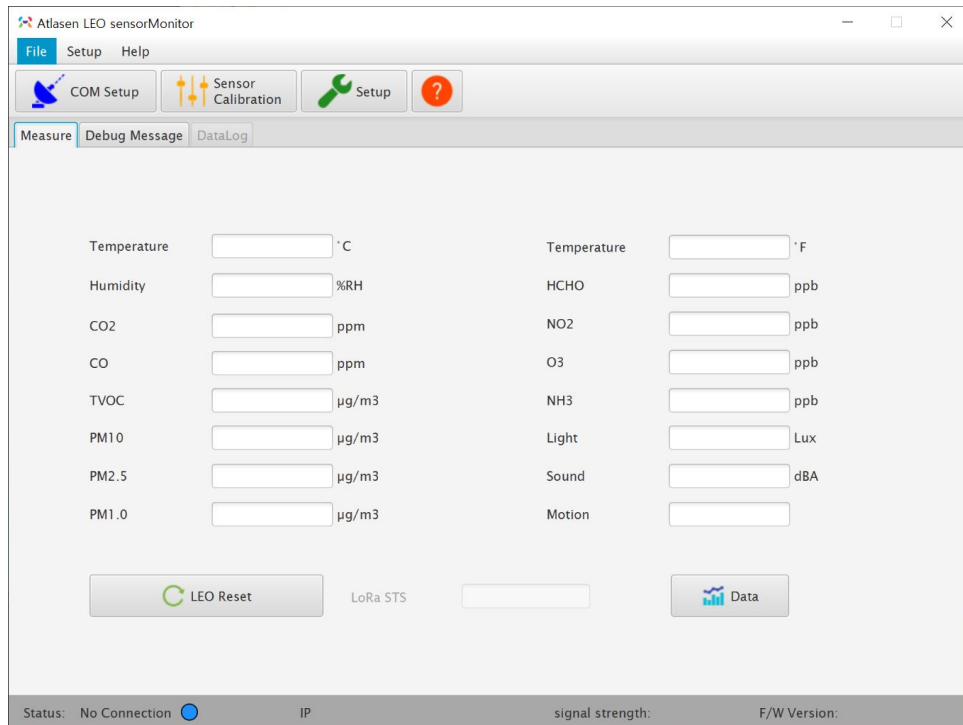
IEQ Monitoring and Diagnostics
Wi-Fi

Version 5.1



Indoor Environmental Quality

How to set Wi-Fi and sensor registration



01 When you unzip **Sensor.zip¹⁾** file, there are lib folder and Sensor.exe for PC, (Atlasen.jar for Mac) inside.

02 This program is written in Java8.0 and JavaFX8.0, hence operates only when Java8 or higher version is installed in PC.

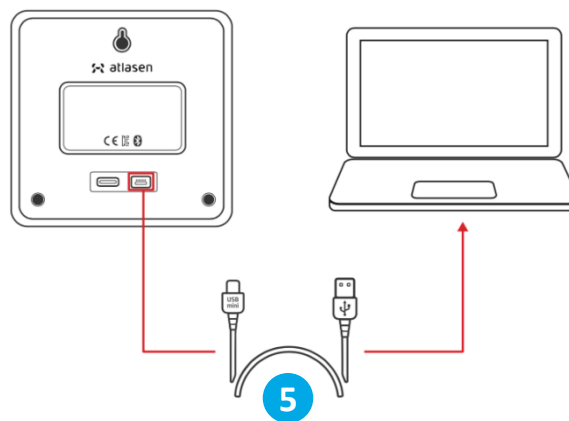
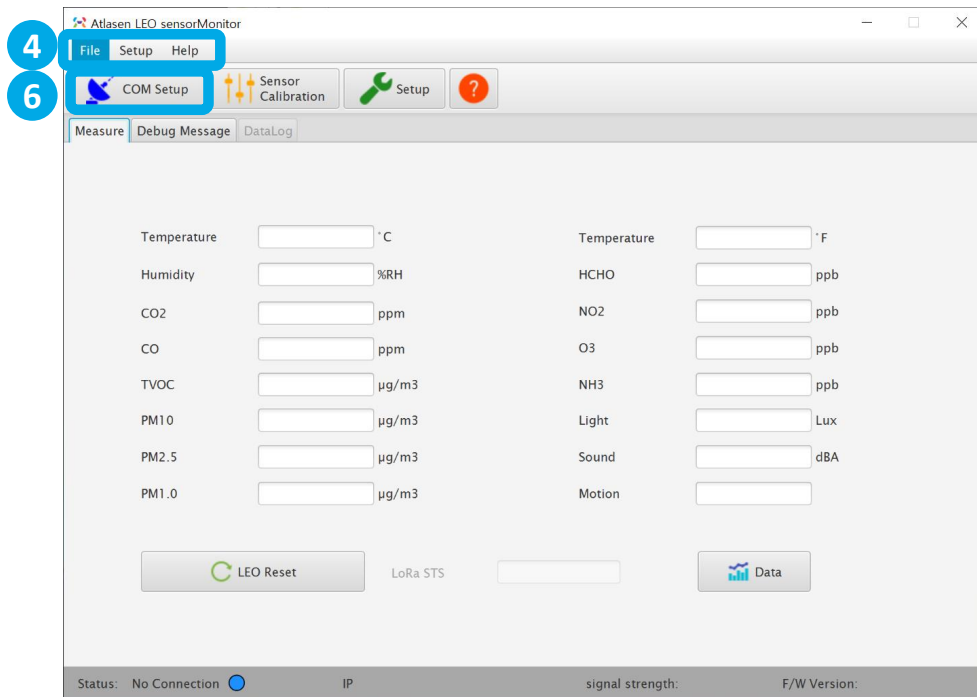
If you use Java10, JavaFX is not installed.

You should install JavaFX SDK additionally.

03 When you double-click **Sensor.exe** for PC (**Atlasen.jar** for Mac) , following screen will show up.

1) You can download here at <http://www.atlasenleo.com/en/support.html>
Atlasenleo - support – Sensor Software

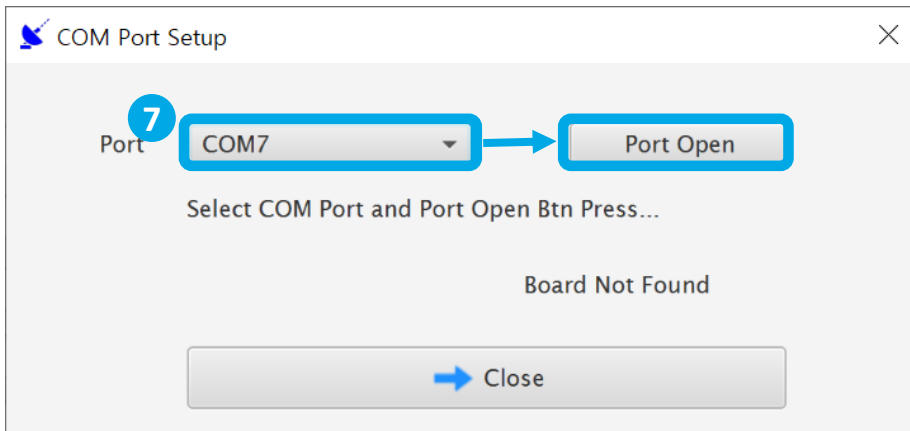
How to set Wi-Fi and sensor registration



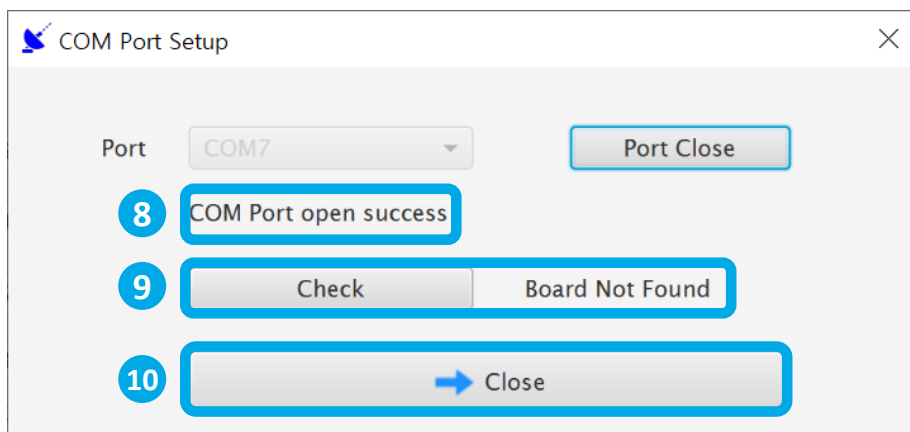
04 There are three categories of menu: File, Setup, Help.

05 Connect mini-USB cable to PC and open LEO.

06 Then, click “COM Setup” button, and you will see the following screen (on the next page).



07 Check “COM Port” of the connected USB Port and select Port (usually the last number). Then, click “Port Open”



08 “COM Port open success” message will show up.

09 Click “Check” button and make sure LEO is connected.

If LEO is connected, you’ll see “Board Connection OK”.

The Circular orange image will turn on and off at the bottom of the main screen.

10 When it is checked, click Close and then click Setup.

How to set Wi-Fi and sensor registration

Setup

LoRa Setup Wi-Fi Setup Sensor Order Check DataLog Date & Time Set

2

SSID

Passwd

Server

3

Transmission Interval sec

4

ID

MAC

1

Read

5

Write

6

Clear

Wi-Fi Setup Screen

01 First, when you click “Read”, the data saved at LEO will show up.

02 Enter router’s “SSID” and “Password”, and “Server” which would receive data
ca.atlasencontrol.com.

03 Fill in “Transmission Interval”.
For example, [900 sec \(configurable\)](#) .

04 Enter the sensor ID.

05 When setup is finished, click “Write” in order to save at LEO.

06 In order to check whether data is saved or not, click “Clear” to delete setup and click “Read” to bring and read data saved at LEO.

How to set Wi-Fi and sensor registration

The screenshot shows a 'Setup' window with a close button (X) in the top right corner. Below the title bar are five tabs: 'LoRa Setup', 'Wi-Fi Setup', 'Sensor Order Check' (which is active and highlighted with a blue border), 'DataLog', and 'Date &Time Set'. The 'Sensor Order Check' tab contains two columns of checkboxes. The left column lists: Temperature, Humidity, CO2, CO, TVOC, DUST10, DUST2.5, DUST1.0, and Wifi (which is checked and highlighted with a purple box). The right column lists: HCHO, NO2, O3, NH3, Light, Noise, Motion, and LoRa WAN. At the bottom of the window are three buttons: 'Read' (with a blue double arrow icon), 'Write' (with a blue lightning bolt icon), and 'Clear' (with an orange eraser icon).

Sensor Order Check screen

- Since different devices have different sensor options, you must select which sensor to use.
- Please select Wi-Fi.

How to set Wi-Fi and sensor registration

Setup

LoRa Setup Wi-Fi Setup **Sensor Order Check** DataLog Date &Time Set

☐ Temperature

☐ Humidity ☐ HCHO

☐ CO2 ☐ NO2

☐ CO ☐ O3

☐ TVOC ☐ NH3

☐ DUST10 ☐ Light

☐ DUST2.5 ☐ Noise

☐ DUST1.0 ☐ Motion

☐ Wifi ☐ LoRa WAN

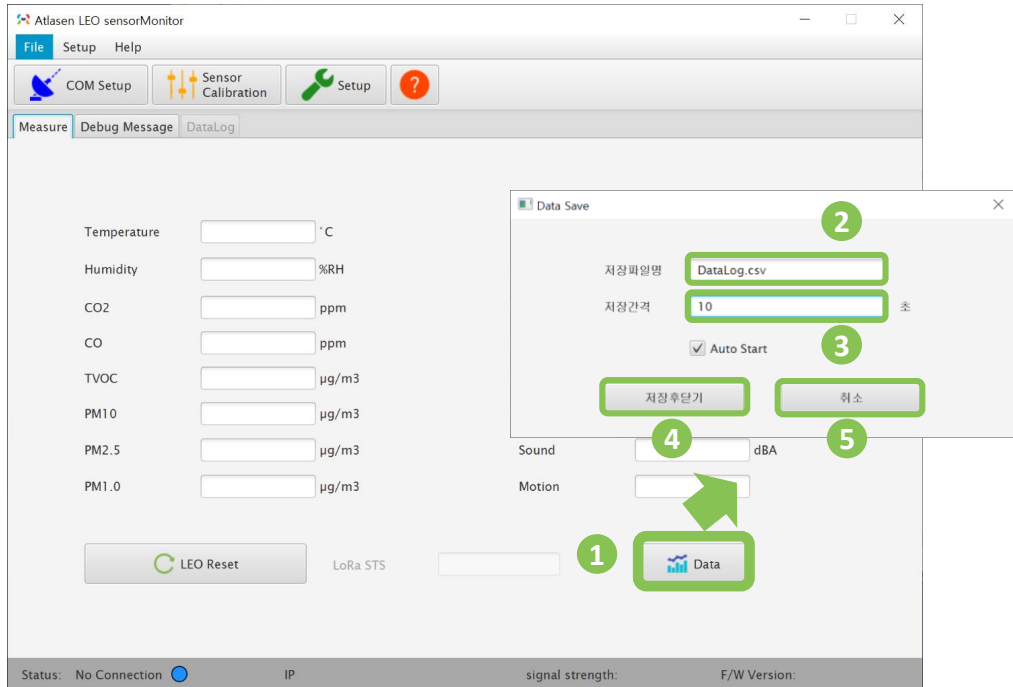
1 Read 2 Write 3 Clear

01 When you click “Read”, data set at LEO will show up.

02 Set up based on the use of a device and click “Write” to save the setting at LEO.

03 In order to check whether data is saved or not, click “Clear” to delete setup and click Read to bring and read data saved at LEO.

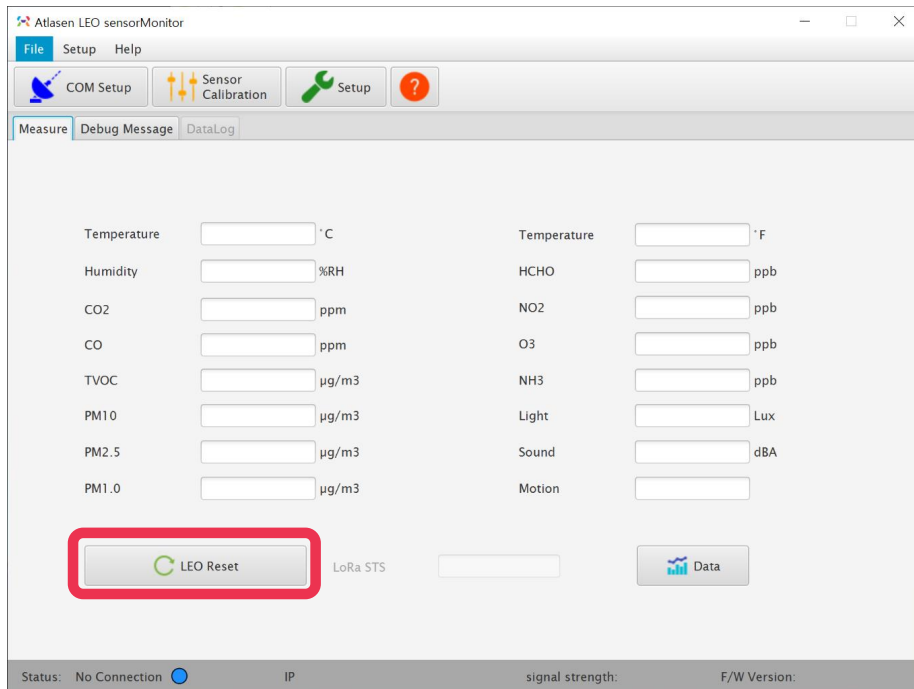
How to set Wi-Fi and sensor registration



- 01 When you click “Data”, data save setting screen will show up.
- 02 Enter a file name to store LEO data.
- 03 Enter an interval to store LEO data.
- 04 Click the button in order to save data save settings.
- 05 Click the button in order to cancel and exit data save settings.
- 06 When setup is finished, a csv file will be created in the path where sensor.exe file is located. You can check the LEO data stored in the file.

※ Do not disconnect mini-USB cable(PC to LEO) while collecting LEO data.

How to set Wi-Fi and sensor registration



- When all the setup is done, reboot LEO to apply changes.
- If you turn LEO off and on again, or click “LEO Reset” button in main screen, LEO will be initialized and restart.



hello@atlasen.com